



PARTNER[®] ACS R5.0
Remote Administration R5.0

Getting Started

518-456-166
Issue 3
March 2002

	About this Guide	2
	What is PARTNER® ACS Remote Administration?	3
	New Features in this Release	4
1	Installation	5
	What You Need To Run PARTNER Remote Administration	5
	Installing the Software	6
	Solving Installation Errors	7
	Starting PARTNER Remote Administration	7
2	An Overview of System Administration	8
	Basic Remote Administration Tasks	8
	Additional Capabilities	9
3	Connecting to the PARTNER ACS System	10
	Overview	10
	Operator Assisted	11
	Automated Attendant	12
	Direct Dial (Local)	13
	Direct Dial (Remote)	14
	Solving Connection Problems	16
4	Retrieving a System Translation	19
	Back up the System Information	19
	Retrieve the Information to Your PC	20
	Disconnect from the PARTNER System	20
5	Making Changes to the System Translation	21
	Exploring the Workspace	21
	Working with Translations	23
6	Activating Your Changes	26
7	Administering Date and Time	27
8	Remote Diagnostics	28
9	DSL Module Administration	29
	Where to Get More Information	30

This guide is your key to PARTNER[®] ACS R5.0 Remote Administration.

Use this guide to learn:

- **What the program can do**
- **How to install the software**
- **How to connect to a PARTNER system**
- **The basics of the administration process**
- **What you can do with Remote Diagnostics**
- **Where to find additional information**

PARTNER ACS Remote Administration gives you the ability to manage a PARTNER ACS R5, R4, or R3 system from your PC. Among the many features it contains are ones that let you:

- **Program the system** (for example, assign outside lines)
- **Program extensions** (for example, program an autodial button on any extension)
- **Back up and restore these and many other settings**

And PARTNER Remote Administration gives you the ability to retrieve diagnostic information from your PARTNER ACS system, allowing you to:

- **View the type of modules installed on the PARTNER system**
- **Retrieve reports on system events such as errors and reboots**
- **Identify the current version of your software**
- **Identify the PCMCIA cards installed in the PARTNER ACS module**

All these features are accessed through a graphical interface that is easy to learn and use. And though the name says “Remote,” you can also use it to manage a PARTNER system locally. You can even choose to work offline and activate your changes when it’s convenient.

Please note these important points:

- PARTNER Remote Administration only works with PARTNER ACS Release 3.0 and later.
- If you have a version of PARTNER ACS Remote Administration on your PC, you must uninstall it before installing this software.
- If you have PassageWay Administration for PARTNER software on your PC, you must uninstall it before installing this software. PARTNER Remote Administration replaces the old software.
- To help ensure the security of the PARTNER system, you cannot create or change the remote administration password with this software. This must be done on the system itself. (See page 18 for instructions on how to do this.)

NEW FEATURES IN THIS RELEASE

In addition to supporting all system programming and remote administration features already available in PARTNER Remote Administration Release 4.0 on your PC, PARTNER Remote Administration Release 5.0 supports the following features and capabilities:

- **PARTNER ACS R5, PARTNER ACS R4, and PARTNER ACS R3 Support**

Release 5.0 provides the capability to program PARTNER ACS R5 systems, PARTNER ACS R4 systems, and PARTNER ACS R3 systems.

- **1600 DSL Module Administration**

Release 5.0 provides the capability to administer the DSL features of the 1600 DSL module. For information on performing DSL-specific administration of the 1600 DSL module, refer to the *PARTNER Advanced Communication System 1600 Module User's Guide* or the online help.

- **Enhanced Remote Diagnostics**

Release 5.0 provides the capability to

- identify and display details about the new 012 ETR module in the board inventory view
- identify PCMCIA cards installed in the ACS module and display details associated with each type of card in the board inventory view
- identify and display details about the 362EC module in the board inventory view

WHAT YOU NEED TO RUN PARTNER REMOTE ADMINISTRATION

On Your PC	
OPERATING SYSTEM	
<i>Microsoft Windows 2000 Server, Windows 2000 Professional, Windows 98, Windows NT 4.0 Server/Workstation with Service Pack 4 or later, or Windows 95</i>	
COMPUTER HARDWARE	
<i>IBM compatible PC with a Pentium processor (100 MHz or faster)</i>	<i>10 MB of free disk space</i>
<i>An internal or external V.34 BIS modem (14.4 or faster)</i>	<i>Windows-compatible VGA monitor supporting at least 16 colors and 800 x 600 pixel screen resolution</i>
<i>16 MB of RAM</i>	<i>Windows-compatible pointing device (a mouse, etc.)</i>

On Your PARTNER ACS System	
<i>PARTNER ACS R5, R4, or R3</i>	<i>PARTNER Remote Access Card, which functions as a modem and a backup/restore card</i>
	<i>PARTNER display phone</i>

INSTALLING THE SOFTWARE

The PARTNER Remote Administration software includes an installation program that copies the application onto your PC's hard drive. You can obtain the PARTNER Remote Administration software from your PARTNER ACS dealer.

To install the software:

1 Start Windows.

2 Start Windows Explorer.

The *Windows Explorer* window appears.

3 Locate the directory that contains the PARTNER Remote Administration software, and then double-click on *setup.exe*.

The PARTNER ACS R5.0 Remote Administration Setup window appears.

4 Respond to a series of standard Windows installation prompts.

During the installation you can:

- Confirm or change the file directory where PARTNER Remote Administration will be installed.
- Choose to create shortcuts which will allow you to run the application by directly clicking on a title or icon in the Start menu and/or the desktop.

The installation program copies files from the CD to the destination directory. When the software is installed successfully, you will see an Installation Completed message.

5 Click on the *Next* button.

The Readme - Notepad window appears.

6 After reading the Readme file, select *Exit* from the File menu in the Notepad window.

SOLVING INSTALLATION ERRORS

If you receive an error message during the installation process, check whether:

- **A version of PARTNER ACS Remote Administration software is still installed on your PC. If it is, you must uninstall this program:**
 - Select *Programs* from the *Start* menu.
 - Choose *PARTNER ACS Remote Administration* and select *Uninstaller for Remote Administration*.

 - **You have at least 10 MB of hard disk space available. If there is not:**
 - Free space on the designated hard drive by transferring files to another drive or deleting them from your disk.
- or
- Install PARTNER Remote Administration on another drive which has at least 10 MB of free space.
-
- **You are using Windows 2000 Server/Professional, Windows 98, Windows NT 4.0 Workstation/Server, or Windows 95.**

STARTING PARTNER REMOTE ADMINISTRATION

PARTNER Remote Administration works like most other Windows programs. To start the program either:

- **Click on the *Start* menu and select *Programs / PARTNER ACS R5 Remote Administration / Remote Administration*.**

Note: This is the default location. If you choose to save your files to an alternate location during installation, your path will be different.

- **Or, if you created a desktop short-cut, double-click on the *Remote Administration* icon on the desktop.**

BASIC REMOTE ADMINISTRATION TASKS

Managing your phone system using PARTNER Remote Administration involves the following tasks:

- **Starting the software** (page 7)
- **Connecting to the PARTNER system** (page 10)
- **Retrieving the system translation** (page 19)
- **Making changes to the information** (page 21)
- **Restoring (that is, activating) the system translation on the system** (page 26)

The file you retrieve from the PARTNER system is called the System Translation. It contains the specific line, extension, button, and other custom settings for the system. You make changes to the translation and then send those changes back to the PARTNER system.

ADDITIONAL CAPABILITIES

In addition to making changes to the system translation, you can use PARTNER Remote Administration to:

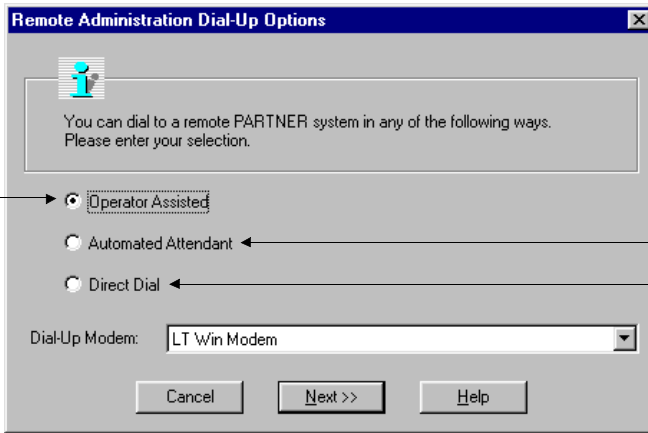
- **Create a new translation** (page 24)
- **Administer the date and time** (page 27)
- **Run diagnostic reports** (page 28)
- **Administer the 1600 DSL module** (page 29)

And while this Remote Administration software is quite powerful, it does have a few limitations. You will not be able to perform a Frigid Start or print a new header on a Call Reporting (or SMDR) report. Of course, these functions can be performed locally at your PARTNER system.

**PARTNER Remote Administration has extensive, context-sensitive help.
Press *F1* to access the online help.**

OVERVIEW

There are three methods of connecting to a PARTNER system.



<p>Operator Assisted Use this method when the PARTNER system does not have an active Automated Attendant system or a dedicated line for the Remote Access card.</p>	<p>Automated Attendant Use this method when the PARTNER system has an Automated Attendant system turned on.</p>	<p>Direct Dial Use this method when you have established either of the following for the Remote Access card:</p> <ul style="list-style-type: none"> ■ An intercom extension (Local Direct Dial) ■ A dedicated outside line (Remote Direct Dial)
--	--	--

Regardless of the method you use, you will need a Remote Administration Password before you can connect. (For information on creating a Remote Administration Password, see page 18.)

OPERATOR ASSISTED

You manually call the main number for the system. The operator then transfers your call to the Remote Access card.

- 1** On the *File* menu, select *Connect to PARTNER System*.
- 2** Select *Operator Assisted*, and click *Next*.
- 3** From a phone connected to the same line as the PC's modem, dial the main number for the PARTNER system.
- 4** When the operator answers, if necessary, ask for the Remote Administration Password.
- 5** Ask to be transferred to extension 76.
- 6** As soon as you hear the extension ring, click *OK*.
- 7** The extension will ring for about 10 seconds. As soon as you hear the modem connect, hang up the phone.
- 8** When prompted, enter the Remote Administration Password and then click *OK*.
- 9** When the connection is completed, a dialog box appears. Click *OK*.

Note: If you are having difficulty completing an operator-assisted connection, the problem may be due to a rough hand-off between the voice call and the modem. With certain types of modems, it may be necessary to connect a bridging adapter to your modem to facilitate the hand-off process.

A bridging adapter is a plastic jack extension. It plugs into a single jack and expands this outlet into a two-jack outlet.

- Plug a bridging adapter into the line jack on your modem.
- Connect both the outside line and the phone line into the bridging adapter.

AUTOMATED ATTENDANT

You connect to the Remote Access card by going through an active automated attendant (such as a voice mail system that automatically answers and routes the call). You can use this method after business hours or anytime the Automated Attendant is active. To use the Automated Attendant method, you must have previously established a Hunt Group for the PARTNER Remote Access card.

- 1 On the **File** menu, select **Connect to PARTNER System**.
- 2 Select **Automated Attendant**, and click **Next**.
- 3 Enter the dial string and then click **OK**.
 - phone number
 - seven commas
 - **7 7** and the single-digit Hunt Group number for the Remote Access Card
- 4 When prompted, enter the Remote Administration Password and then click **OK**.
- 5 When the connection is completed, a dialog box appears. Click **OK**.

To create a Hunt Group while at a PARTNER phone:

- 1 From extension 10 or 11, activate System Programming by pressing **Feature 0 0**
- 2 Press the left **Intercom** button twice
- 3 Enter **# 5 0 5**
- 4 At the **GROUP:** prompt, enter a group number (1–6)
We recommend the number 6.
- 5 The following display appears
HUNT GROUP 6
EXTENSION:
- 6 Enter extension **7 6**
(This is the pre-established extension number for your PARTNER modem.)
- 7 Exit programming mode by pressing **Feature 0 0**

- For more information about Hunt Groups, refer to the PARTNER system documentation.
- For information about the location of special programming buttons on a PARTNER phone, see the PARTNER system documentation.

DIRECT DIAL (LOCAL)

You call from the same location as the PARTNER system and dial an internal extension.

- 1 On the **File** menu, select **Connect to PARTNER System**.
- 2 Select **Direct Dial**, and click **Next**.
- 3 Enter the intercom number for the Remote Access card (extension 76) and click **OK**.
- 4 When prompted, enter the Remote Administration Password and then click **OK**.
- 5 When the connection is completed, a dialog box appears. Click **OK**.

In order to connect locally to the modem on the Remote Access card, you must establish it as an intercom extension.

- 1 Plug the line from your PC modem into a spare extension port on your PARTNER ACS system.

You must now program your PARTNER system to enable your PC to place an intercom call:

- 2 From extension 10 or 11, activate System Programming by pressing **Feature 0 0**, **System Program**, **System Program**, **Central Tel Program**
- 3 At the Extension: prompt, enter the extension number that you connected to in Step 1
- 4 Press *** ***
- 5 Press the right **Intercom** button
The display will read "Automatic Line Selection"
- 6 Press *** *** to exit Automatic Line Selection
- 7 Enter **Feature 0 0** to exit programming

For information about the location of special programming buttons on a PARTNER phone, see the PARTNER system documentation.

DIRECT DIAL (REMOTE)

You dial an outside line that is assigned to the PARTNER Remote Access card. Use this method only if the system does not have an active voice messaging system. If the system does have its voice messaging activated, use the Automated Attendant method.

- 1** On the *File* menu, select *Connect to PARTNER System*.
- 2** Select *Direct Dial*, and click *Next*.
- 3** Enter the phone number for the **Remote Access** card and click *OK*.
- 4** When prompted, enter the **Remote Administration Password**, and then click *OK*.
- 5** When the connection is completed, a dialog box appears. Click *OK*.

See the next page for detailed information on how to set up your PARTNER system to accommodate the Direct Dial (Remote) method.

Before you can directly call a PARTNER phone system from a remote location, you must assign the outside line that you have dedicated to your PARTNER modem to a Hunt Group. This will enable an outside call to bypass the receptionist and ring directly at the PARTNER modem.

Assign the outside line to a Hunt Group.

- 1 From extension 10 or 11, activate System Programming by pressing **Feature 0 0, System Program, System Program # 2 0 6**
- 2 At the **GROUP:** prompt, enter a group number (1-6)
We recommend the number 6.
- 3 At the **Line** prompt, enter the line number that you will be dedicating to use for remote access.

Now you must program the Hunt Group to ring at the modem.

- 4 Press **# 5 0 5**
- 5 At the **GROUP:** prompt, enter the number you entered in Step 2. A display similar to the following appears:
HUNT GROUP #
EXTENSION:
- 6 Enter **7 6**
(This is the pre-established extension number for your PARTNER modem.)
- 7 Press **Feature 0 0** to exit programming

Now you must change the ringing options so this dedicated line does not ring at all your phone extensions.

- 8 From extension 10 or 11, activate Centralized Programming by pressing **Feature 0 0, System Program, System Program, Central Tel Program**
- 9 Enter an extension number
The green lights next to the line buttons show the current Line Ringing settings:
Immediate Ring - steady light; Delayed Ring - slow flash; No Ring - quick flutter
- 10 Press the line button until the button light is set to **No Ring (quick flutter)**
- 11 Repeat Steps 9 and 10 for all extensions, except 76
- 12 Press **Feature 0 0** to exit programming

For information about the location of special programming buttons on a PARTNER phone, see the PARTNER system documentation.

SOLVING CONNECTION PROBLEMS

PARTNER Remote Administration automatically recognizes your modem, identifying its configuration as well as the port it is connected to. If you encounter problems using your modem or have trouble connecting:

- 1 Check that the modem on your PC is working properly by dialing into another system (such as an online service) that you know you can connect with.**

Follow the steps that you have used to successfully complete the connection in the past.

- If the modem call is completed successfully (i.e., you achieve access to the desired system), then you have confirmed that the modem is working properly. However, you should also test your modem by using the “Windows Phone Dialer,” as explained in the next bullet item.

If the modem call is not completed successfully, then the problem could lie with the modem itself. (See #2 below.)

- You can test your modem by using the Windows Phone Dialer.

Start Windows Phone Dialer and make a call to any telephone number. (Refer to Windows Help to make a call with Phone Dialer.)

The computer will try to dial that number. If the computer can access a dial-tone and dial the number, you know that your modem is working properly. (See #3 on the next page.)

- 2 Check your modem configuration in your Windows system.**

- Click on the *My Computer* icon on your desktop, select *Control Panel*, and then double-click on the *Modems* icon (Windows NT, 98, and 95) or the *Phone and Modems Options* icon (Windows 2000).
- Access the modem information for your system. (Refer to Windows Help to access the modem information.)
- Verify that the modem information displayed corresponds to the modem you are using.

If the modem information is incorrect, you will need to reinstall your modem:

- Remove the modem with the incorrect information. Under the Control Panel, select *Add New Hardware* and follow the prompts. You should also refer to the Installation Instructions that accompanied your modem.

If the modem information is correct, make sure that the port listed is the port your modem is actually connected to.

E Check your connection rate.

If your connection to the PARTNER system is operating at less than 9600 baud:

- Click on the *My Computer* icon on your desktop, select *Control Panel*, and then double-click on the *Modems* icon (Windows NT, 98, and 95) or the *Phone and Modems Options* icon (Windows 2000).
- Make sure that the connection rate that appears in the Maximum Speed box is the highest rate that can be used by both your modem and the modem at the PARTNER system.
- For Windows NT, 98, and 95, make sure the check box entitled *Only Connect At this Speed* is NOT checked.
- Try your call again.

Creating a Remote Administration Password

For security purposes, the Remote Administration Password is different from the system Password. The Remote Administration Password can only be created on the PARTNER system and must exist before you can connect.

Using a PARTNER display phone:

- 1 From extension 10 or 11, activate System Programming by pressing **Feature 0 0**
- 2 Press **System Program**
- 3 Press **System Program # 7 3 0**
- 4 Enter a password up to 8 alphanumeric characters in length (there is no default password). Each character is established by entering two digits. (See the Character Code Table (5-3) on page 5-131 of the Programming and Use manual for additional details.)
- 5 To save the password, press the **Enter** key. The display shows "Remote Password" confirming that the password was saved. (Warning: If you exit without pressing **Enter**, your new password will not be saved.)

For information about the location of special programming buttons on a PARTNER phone, see the PARTNER system documentation.

Before you can modify your system translation, you must retrieve the current system translation from your PARTNER system. This involves the following steps:

- **Backing up the system information**
- **Retrieving the system information to your PC**
- **Disconnecting from the PARTNER system (optional)**

BACK UP THE SYSTEM INFORMATION

After connecting to the system, you must back up the system information before making any changes.

- 1 On the Administration menu, select *Retrieve System Information*.**
- 2 Click *Remote Backup*. If you want to also retrieve this system information, click *Retrieve System Translations*. If you want to also retrieve maintenance information for the PARTNER system, click *Retrieve Maintenance Data*.**
- 3 Click *Next*.**
- 4 If you selected *Retrieve System Translations* and/or *Retrieve Maintenance Data*, a dialog box will appear. Select the file or enter a new name, and then click *Save*. You will repeat this step if you are retrieving both the current translation and the maintenance information. When the retrieve is complete, a dialog box will appear. Click *OK*.**

The system translation is copied to the Remote Access card on the PARTNER system. (*System translation* is the technical term for the programming information.)

A backup usually takes about fifteen seconds.

RETRIEVE THE INFORMATION TO YOUR PC

You make the changes to the translation on your PC, not on the system itself.

- 1** On the *Administration* menu, select *Retrieve System Information*.
- 2** Click *Retrieve System Translations*. If you want to retrieve the current translations, click *Remote Backup*. If you want to also retrieve maintenance information for the PARTNER system, click *Retrieve Maintenance Data*.
- 3** Click *Next*.
- 4** A dialog box will appear. Select the file or enter a new name. Click *Save*. You will repeat this step if you are retrieving both the current translation and the maintenance information.

Retrieving the information takes about one minute.

- 5** When the retrieve is complete, a dialog box will appear. Click *OK*.

DISCONNECT FROM THE PARTNER SYSTEM

After you have retrieved the file, you can disconnect and work offline. You can remain connected if you don't expect your changes to take long to program.

- 1** On the *File* menu, select *Disconnect from PARTNER System*.

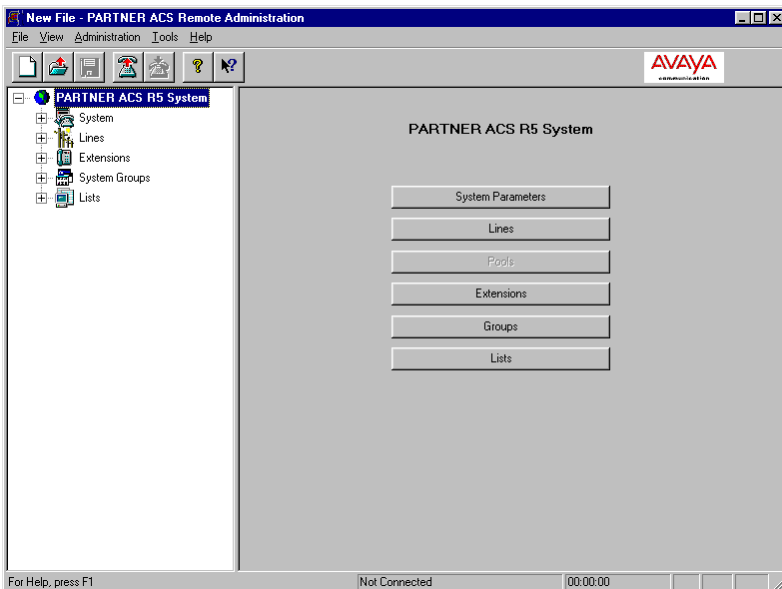
A message box appears.

- 2** Click *OK*.

When you first start PARTNER Remote Administration, you will be prompted to specify whether you want to create a file for a PARTNER ACS R5 system, a PARTNER ACS R4 system, or a PARTNER ACS R3 system. An untitled file will appear on your PC's screen, indicating the PARTNER ACS release (that is, R5, R4, or R3). This is the workspace where you will perform all your administration actions such as programming and editing existing translations as well as creating new translations.

EXPLORING THE WORKSPACE

The workspace contains six major windows. Within each window are additional sub-sections where you make changes to specific functions.



You do not need to be connected to the PARTNER system to change the system translations. After you have retrieved system information to your PC, you can disconnect from the PARTNER system and work off-line. If you do this, you will then need to save your changes into another file and reconnect to restore them.

WINDOWS	FUNCTION	SECTIONS/FEATURES
System Window	Global settings	<ul style="list-style-type: none"> • General Parameters • Central Office Parameters • Adjuncts (Accessories you may use with the system) • Automatic System Answer (ASA) • Direct Extension Dial (DXD)
Lines Window	Administrative procedures for particular lines	<ul style="list-style-type: none"> • Dial Mode • Hold Disconnect Time • Ring Pattern • Group Call Distribution • Line Coverage Extensions • Voice Mail System (VMS) Hunt Properties • Pool Information (only available when the system is configured for Hybrid mode)
Pools Window	Assign lines to or remove lines from pools	<p>NOTE: The Pools window is available only when the system is configured for Hybrid mode.</p>
Extensions Window	Settings for specific extensions	<ul style="list-style-type: none"> • General Parameters • Button Programming • Personal Speed Dial List • Restrictions • Group Memberships • Caller ID Information • Auxiliary Equipment • Copy Settings
System Groups Window	Specify the type of group you want to assign to different extensions and/or lines	<ul style="list-style-type: none"> • Pickup Groups • Calling Groups • Hunt Groups • Night Service Group
Lists Window	Set up the particular lists and assign to particular extensions	<ul style="list-style-type: none"> • Allowed Lists • Disallowed Lists • Emergency Numbers • Speed Dial Numbers • Forced Account Codes

WORKING WITH TRANSLATIONS

Within the workspace environment, you can:

- **Edit a translation you have just retrieved**
- **Edit a translation stored on your PC**
- **Create a new or custom translation**

The changes you make to a file do not take effect on your PARTNER system until you send the information back to the PARTNER system and restore the translation.

To edit a translation you have just retrieved

The translation automatically appears in your workspace as a read-only file when the retrieve is complete.

- 1** **Make your changes.**
- 2** **After you have completed your changes, save the file with a new name.**
- 3** **Send and restore the translation in the file with the new name to your PARTNER system to activate the changes.**

To edit a translation you already saved

- 1** On the *File* menu, select *Open*.
- 2** Locate the file and click *Open*.
- 3** Edit the file.
- 4** Save the file.
- 5** Send and restore the translation to your PARTNER system to activate the changes.

After making changes to a translation, be sure to save them.

To create a new translation

If you are administering a new PARTNER system or several PARTNER systems, you can create a translation to be used on any or all of them. For example, a travel agency might have programming needs similar to other travel agencies. In such cases, it could be helpful to create files that are templates for such businesses (such as "*Travel.xmg*"). This template could be used as a starting point for other travel agencies, saving you time and providing your customer with a tested and useful profile.

- 1** On the *File* menu select *New*.
- 2** Select the PARTNER system version, and then click *OK*.
- 3** Verify the PARTNER system version you selected, and then click *OK*.
- 4** Establish the profile by making changes to the untitled workspace.
- 5** Save the changes by saving the file with a unique name.

Use this translation as a template for other systems with similar requirements.

- 6** Send and restore the translation to the PARTNER system(s).

To print a translation to a text file

You can print the translations to a text file that you can view and print with any word processing software. By default, the text file is saved in the Administration subdirectory.

- 1** Open the file you want to print.
- 2** On the File menu, select *Print to File*.
- 3** Enter the name for the text file you want to create, and then click *Save*.
- 4** Select the system translation information you want to print to the text file.
- 5** Click *OK*.

Troubleshooting translation problems

If you're having problems with a PARTNER system, you can use Remote Administration to replace a problematic translation with a known working translation.

- 1** Select a known working translation (a file previously saved on your PC).
- 2** Send it back to the PARTNER system.
- 3** Restore that translation on the system.

You can also use PARTNER Remote Administration to review system problems. See "Remote Diagnostics" on page 28.

After you have made changes to a translation and saved the file, you can send the changes to the PARTNER system and activate them. PARTNER Remote Administration refers to the activation process as a “restore”.

Send your changes to the system

- 1 Be sure you are connected to the PARTNER system.**
 - On the *File* menu, select *Connect to PARTNER System*.
- 2 On the *Administration* menu, select *Send System Information*.**
- 3 Select the file you want to send and click *Open*.**

Sending the information takes about one minute.

Restore the changes

- 1 On the *Administration* menu, select *Restore System Translations*.**

A message box appears. Activating the changes takes about fifteen seconds.

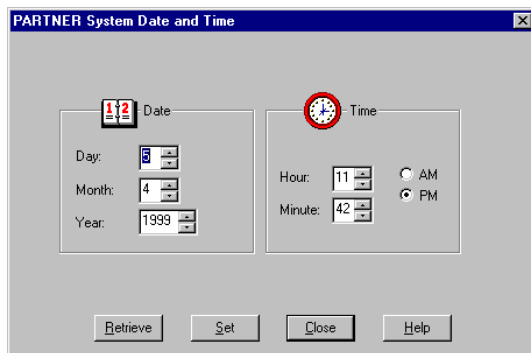
- 2 Click *OK*.**

After the “Restore” process is complete, you will automatically be disconnected from the PARTNER system. A message box appears.

- 3 Click *OK*.**

When you restore the translation, the PARTNER system will be out of service for several seconds. Any calls in progress will be terminated. You may want to restore a translation after business hours.

With PARTNER Remote Administration, you can change the date and time setting on your PARTNER system. To ensure that you do not inadvertently change these settings, this change can only be made while you are connected to the system. The new date and time will be activated immediately. It does not require you to restore information to the system.



To change the date and time:

- 1** Connect to the PARTNER system.
- 2** On the *Administration* menu, select *Date and Time*.

You will see your PC's date and time settings displayed.

- 3** Click *Retrieve*.

The date and time of the PARTNER system will now be displayed.

- 4** Change the date or time as necessary.

- 5** Click *Set*.

The new date and time is sent to the PARTNER system.

- 6** Click *Close*.

- 7** Disconnect from the PARTNER system (optional).

You can also retrieve the system date and time at any point. For troubleshooting purposes, you may need to check this information, but you may not wish to make a change. In this case, follow Steps 1 through 3, and then go to Step 6.

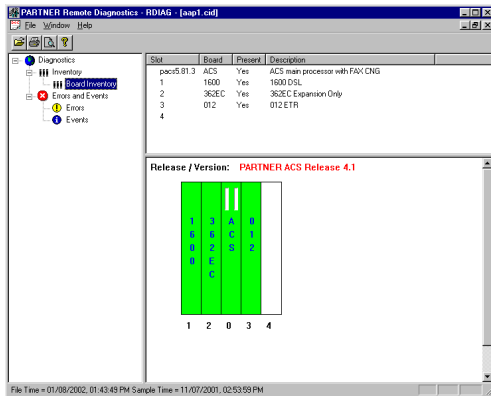
You can retrieve important information about the PARTNER system. After connecting:

- 1** On the *Administration* menu, select *Retrieve System Information*.
- 2** Click *Retrieve Maintenance Data*. If you want to view the retrieved maintenance data, click *View Maintenance Data After Retrieval*.
- 3** Click *Next*.
- 4** Enter a new filename and click *Save* to save the file.

The system retrieves the information. If you selected *View Maintenance Data After Retrieval*, the Remote Diagnostics program launches, displaying:

- An inventory of the system components. (Holding the mouse over a module displays details associated with that module.)
- A record of system events
- A record of system errors

If you did not select *View Maintenance Data After Retrieval*, select *Remote Diagnostics* from the *Tools* menu to launch the Remote Diagnostics program. Open the diagnostics file you want to view.



Note: You can print a report of your system inventory, system events, and system errors by clicking the printer icon on the toolbar.

With PARTNER Remote Administration, you can administer the DSL features of the 1600 DSL module. To administer the DSL module:

1 **Connect to the PARTNER system.**

2 **On the *Administration* menu, select *DSL Administration*.**

The PARTNER DSL Administration window appears.

3 **Press any key.**

The Enter Login ID prompt appears.

4 **Enter your login (for example, *Supervisor*) and press the ENTER key.**

The Enter Password prompt appears.

5 **Enter your password (if necessary) and press the ENTER key.**

The Main Menu appears.

You can now administer the DSL module. For information on administering the 1600 DSL module, refer to the *PARTNER Advanced Communication System 1600 Module User's Guide* or the online help.

- **PARTNER Remote Administration contains an integrated Help file that can provide you with detailed information on all of the program's features. Press *F1* for context-sensitive help.**
- **For more information on PARTNER administration, you can refer to the PARTNER ACS documentation.**
- **For additional technical support, you can contact your local Authorized Dealer or you can call Avaya Technical Support at 1 800 628-2888. In the continental U.S., Avaya provides a toll-free customer hotline 24 hours a day. Consultation charges may apply.**